



Meridian Solar Farm

EN010169

Volume 6

Environmental Statement

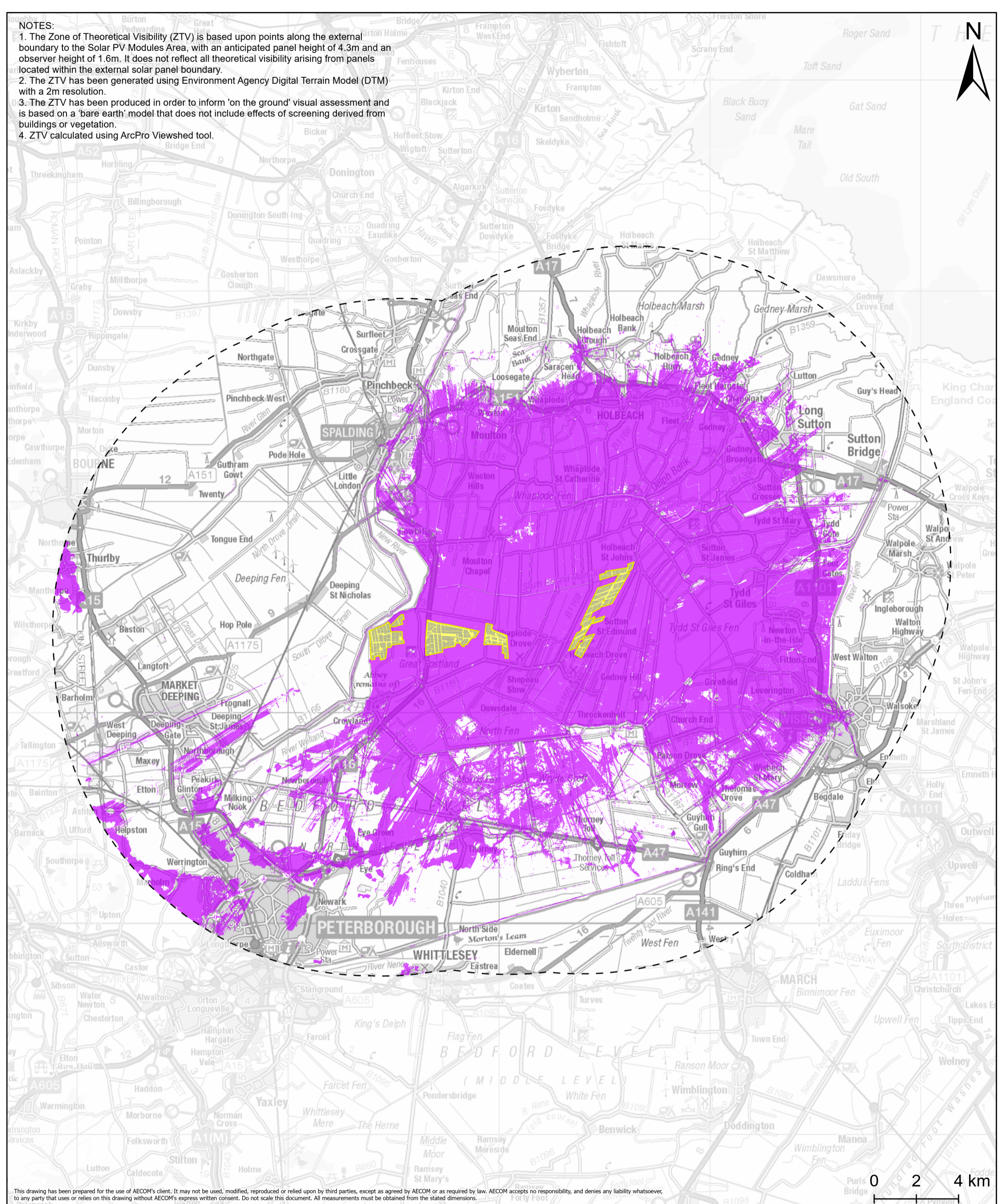
6.2 ES Figure 12-7: Bare
Earth Viewshed – Solar
Development Area

APFP Regulation 5(2)(a)

Infrastructure Planning (Applications:
Prescribed Forms and Procedure)
Regulations 2009

March 2026

- NOTES:**
1. The Zone of Theoretical Visibility (ZTV) is based upon points along the external boundary to the Solar PV Modules Area, with an anticipated panel height of 4.3m and an observer height of 1.6m. It does not reflect all theoretical visibility arising from panels located within the external solar panel boundary.
 2. The ZTV has been generated using Environment Agency Digital Terrain Model (DTM) with a 2m resolution.
 3. The ZTV has been produced in order to inform 'on the ground' visual assessment and is based on a 'bare earth' model that does not include effects of screening derived from buildings or vegetation.
 4. ZTV calculated using ArcPro Viewshed tool.



This drawing has been prepared for the use of AECOM's client. It may not be used, modified, reproduced or relied upon by third parties, except as agreed by AECOM or as required by law. AECOM accepts no responsibility, and denies any liability whatsoever, to any party that uses or relies on this drawing without AECOM's express written consent. Do not scale this document. All measurements must be obtained from the stated dimensions.

Project Title			
Meridian Solar Farm			
Map Title			
Environmental Statement			
Figure 12-7: Bare Earth Viewshed - Solar Development Areas			
Scale	Version	Drawn	Reviewed
1:160,000	0	LL	DH

Legend
Solar PV Modules
Solar PV Area Outline
Solar PV Area Outline - 15km Buffer
Bare Earth Viewshed for Solar PV Area Outline
Visible
Not Visible

Date: 20/03/2026
Copyright
Contains OS data © Crown Copyright and database right 2025. Contains data from OS Zoomstack, Contains OS data © Crown copyright 2025. Reproduced from Ordnance Survey digital map data © Crown copyright 2025. All rights reserved. Licence number AC0000808122.

